



MOSSMAN STATE HIGH SCHOOL

**YEAR 10 SUBJECT SELECTION
HANDBOOK**

2026



Table of contents

Subject Overview	03
Student Resource Scheme (SRS)	04
Changing Subjects	04
Subject Offerings for Year 10 – 2025 & Year 11 – 2026	05

CORE SUBJECTS

English	06
Mathematics	06
Science	07
History	07

ELECTIVE SUBJECTS

Economics & Business	08
Civics & Citizenship	08
Health & Physical Education	09
Agriculture	10
Visual Art	10
Digital Technologies	11
Media Arts	11
Music	12
Food Specialisations	13
Materials & Technologies Specialisations	14
Distance Education Subjects	14

EXTRA-CURRICULAR

Instrumental Music Program	15
Duke of Edinburgh	16

HOW TO MAKE YOUR SELECTION

How to enter Subject Preferences on OneSchool	17
---	----





SUBJECT OVERVIEW

Year 10 – 2025

During Year 10 all students will study four (4) core subjects and three (3) elective subjects. When selecting three (3) elective subjects, students need to take into account:

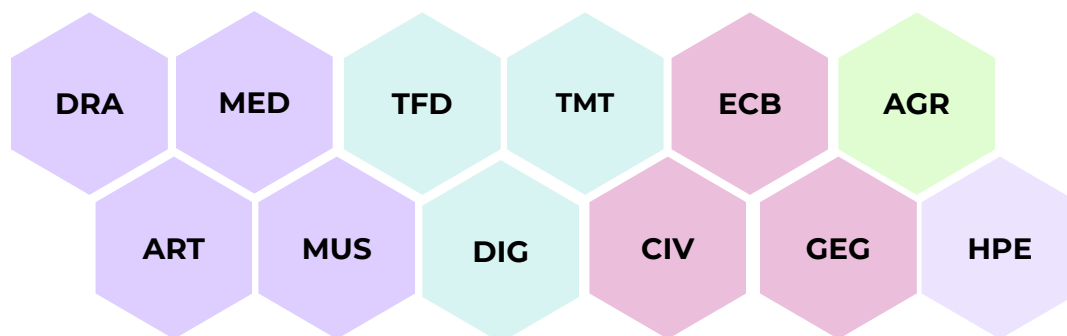
- Interests
- Abilities
- Past results
- Future goals

CORE SUBJECTS



ELECTIVE SUBJECTS

Students choose three (3) electives to study all year.



SUBJECT SELECTION PROCESS

PLEASE CHOOSE CAREFULLY. Subject preferences are required for planning Year 10 in 2026. It is important to be aware that subject classes will be created based on these subject preferences. If parent(s)/guardian(s) would like to discuss any aspect of their son's/daughter's subject selection, please contact the school ASAP to arrange a phone or a personal interview.

SUBJECT OFFERINGS – Following analysis of Elective Subject preferences, classes will be formed. Some students may have to revise their selection if:

- not enough students select a subject for a class to be formed, OR
- too many students select a subject.

If a subject is over maximum capacity, it will be capped using a criteria system considering the following:

- Subject fees
- Workplace health and safety
- Attendance
- Achievement
- Effort

Students may choose to participate in Instrumental Music and/or the Duke of Edinburgh Award/ and/or Distance Education in addition to the 3 subjects chosen. This is done as an addition to the Subject Selection Process and involves consultation with the relevant staff.

STUDENT RESOURCE SCHEME (SRS)



Mossman State High School is committed to providing quality curriculum programs for all students. The P & C Association and school staff determine the Student Resource Scheme (SRS) fees each year to ensure adequate resources are available. These fees are set as part of the consultative budget process. Most subject fees are covered under the (SRS) fees. Extra fees apply to subjects with consumable products. Fees for these subjects are listed below. The fees provide resources for students, which enable them to achieve quality outcomes in the subjects that they choose to study.

As a guide, the fees for 2025 were:

YEAR 10 GENERAL FEES - \$240.00

ADDITIONAL FEES Subjects with consumable resources

Agriculture	\$80.00
Digital Technologies	\$30.00
Media Arts	\$60.00
Food Specialisations	\$155.00
Material and Technologies	\$80.00
Visual Arts	\$65.00

Extra-Curricular

Duke of Edinburgh	From: \$190.00 to \$200.00
Instrumental Music Program	\$100.00

If you have any questions regarding subject general or additional fees, please contact the school.

CHANGING SUBJECTS



Students will have the opportunity to change subjects at the end of Semester 1.

Students wishing to change subjects should contact the Deputy Principal. Parental permission will be required for students to change subjects.

SUBJECTS AND THEIR PATHWAY

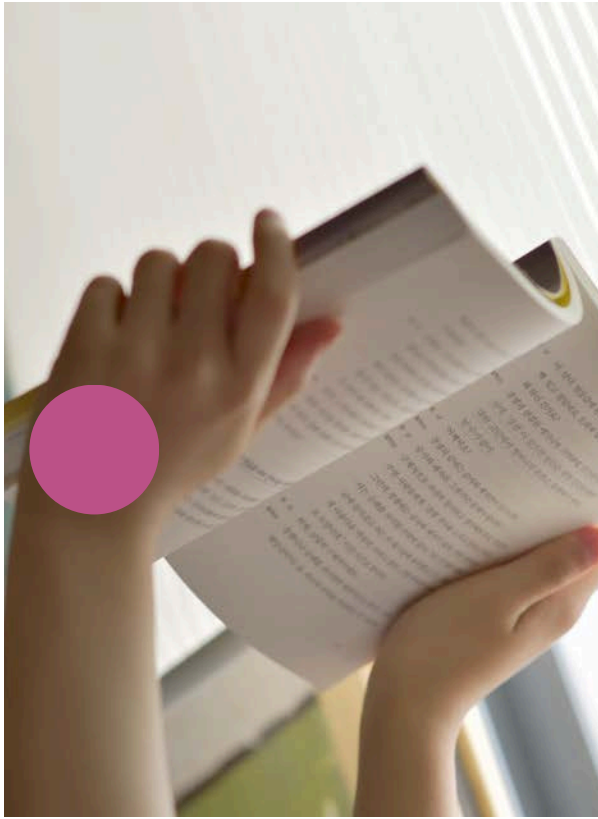
Key Learning Area	Year 10 Subject	Year 11 Subject
English	English (ENG)	English Essential English
Mathematics	Mathematics (MAT)	General Mathematics Mathematical Methods Specialist Mathematics Essential Mathematics
Sciences	Agriculture (AGS) Science (SCI)	Agriculture Biology Chemistry Marine Science Physics
Humanities and Social Sciences	Geography (GEG) History (HIS) Economics and Business (ECB) Civics and Citizenship (CIV)	Geography Modern History Business Studies Legal Studies
Health and Physical Education	Health & Physical Education (HPE)	Physical Education Sport and Recreation
The Arts	Drama (DRA) Media Arts (MED) Music (MUS) Visual Art (ART)	Media Arts in Practice Music
Technologies	Digital Technologies (DIG) Food Specialisation (TFD) Materials & Technologies Specialisation (TMT)	Digital Solutions Hospitality Practices Industrial Technology Skills
Extra Curricular	Instrumental Music (INM) Duke of Edinburgh (DED)	Instrumental Music Duke of Edinburgh
Other Subjects	Distance Education	Distance Education

■ General Subject

■ Applied Subject

■ VET Subject

CORE SUBJECTS



ENGLISH (ENG)

AIMS

To develop students' abilities to compose and comprehend spoken and written English fluently and effectively, for a wide range of purposes.

COURSE CONTENT

- Based on the National curriculum it provides entry into Senior English.
- Each semester is based on a broad theme related to the texts under consideration.
- Students will be actively engaged in a range of texts including novels, poetry, drama and media.

ASSESSMENT

Assessment is composed of imaginative, analytical and persuasive writing and speaking tasks.

FEES

The fee for English is covered by the general fee.

RELATED SUBJECTS IN YEAR 11 & YEAR 12 - *English and Essential English*

MATHEMATICS (MAT)

AIMS

To prepare students for Senior Maths options by:

- developing the mathematical knowledge and skills that are considered pre-requisite in all senior Mathematics courses.

COURSE CONTENT

- The course has been developed using the Australian Curriculum V9 and develops understanding, fluency, problem solving and reasoning skills.

ASSESSMENT

Student progress will be assessed using examinations and assignments.

FEES

The fee for Mathematics is covered by the general fee. A scientific calculator is essential and costs \$24.00 from the School Office.

RELATED SUBJECTS IN YEAR 11 & 12 - *Essential Mathematics, General Mathematics, Mathematical Methods, Specialist Mathematics*



CORE SUBJECTS



SCIENCE (SCI)

AIMS

Develop a solid foundation for biological, chemical, physical, earth & space sciences and prepare for Senior.

COURSE CONTENT

Arranged around 4 topics

- Biology – Genetics: Heredity, Evolution and Natural Selection.
- Chemistry – Atomic Theory: Atomic structure and relationships within the periodic table.
- Earth and Space – Origin of the Universe: Big Bang Theory, galaxies, stars and solar systems.
- Physics – Energy & motion: Energy transfers and transformations and the laws of physics.

ASSESSMENT

- Supervised Examination
- Data tests
- Student Experiments
- Research investigations.

FEES

The fee for Science is covered by the general fee. Excursions will be an additional fee.

RELATED SUBJECTS IN YEAR 11 & YEAR 12 – *Biology, Chemistry, Marine Science & Physics.*

HISTORY (HIS)

AIMS

History is a disciplined process of inquiry that develops students' knowledge, curiosity and imagination about the past.

COURSE CONTENT

Students learn about the following historical topics:

- WWII
- Rights and Freedoms
- Migration Experience
- 20th Century
- Australia's social, cultural, economic and political development.

ASSESSMENT

Knowledge and understanding, and Skills are assessed through examinations and research tasks.

FEES

The fee for History is covered by the general fee.

RELATED SUBJECTS IN YEAR 11 & YEAR 12 – *Modern History*



ELECTIVE SUBJECTS

ECONOMICS & BUSINESS (ECB)

AIMS

Economics and Business develops the knowledge, understanding and skills that will equip students to shape their social and economic futures.

COURSE CONTENT

- Managing financial responsibilities
- Competing as a business in the global community
- Managing economic performance and standard of living
- Improved business productivity

ASSESSMENT

- Includes reports and business plans

FEES

The fee for Economics & Business is covered by the general fee.

RELATED SUBJECTS IN YEAR 11 & 12 - *Business*



CIVICS & CITIZENSHIP (CIV)

AIMS

Civics and Citizenship provides students with opportunities to investigate political and legal systems, and explore the nature of citizenship, diversity and identity in contemporary society.

COURSE CONTENT

- Study of the Legal System
- Study of crime and punishment
- Study of police powers
- Study of youth justice

ASSESSMENT

- Includes examinations and assignments

FEES

The fee for Civics & Citizenship is covered by the general fee.

RELATED SUBJECTS IN YEAR 11 & 12 - *Legal Studies*

ELECTIVE SUBJECTS



HEALTH & PHYSICAL EDUCATION (HPE)

AIMS

By the conclusion of the course, students should:

- recognise and explain concepts and principles about specialised movement sequences and strategies
- demonstrate specialised movement sequences and strategies for a range of sports
- analyse and synthesise data to movement strategies about movement
- evaluate and justify movement strategies about movement
- identify factors that influence participation in sport and active recreation
- describe how physical skills can enhance participation and performance in sport and active recreation activities
- demonstrate skills needed to produce a project assessment task
- demonstrate skills needed to plan, run and evaluate small group coaching sessions.

COURSE CONTENT

- Coaching drill preparation and delivery
- Exercise Physiology
- Anatomy and Physiology
- Movement concepts and principles of play

ASSESSMENT

TERM 1: Assignment

TERM 2: Project

TERM 3: Project

TERM 4: Either exam or assignment

PREREQUISITES

A Sound level of achievement in English and Junior HPE is desirable.

FEES

The fee for HPE is covered by the general fee.

RELATED SUBJECTS IN YEAR 11 & YEAR 12 –

Physical Education, Sport and Recreation, Certificate III in Fitness.

ELECTIVE SUBJECTS



AGRICULTURE (AGR)

AIMS

Students will:

- develop a broad understanding of plants, soil and types of Agricultural Industries
- develop practical skills for working in industries
- identify issues with agriculture eg. pests/disease etc
- examine local farming methods and business models
- investigate Agricultural enterprises for the future
- spend significant class time working in the Ag plot

COURSE CONTENT

- Animal Husbandry
- Biodiversity
- Agricultural Environments
- Plant Enterprises

ASSESSMENT

Includes practical exercises, research assignments, reports and exams.

FEES

As a guide, the 2025 fee for Agriculture was \$80.

RELATED SUBJECTS IN YEAR 11 & YEAR 12 – *Agricultural Practices*

VISUAL ART (ART)

This one year course amalgamates practical art, conceptual art and subject specific careers.

AIMS

- provides opportunities for students to engage in artist and photographic techniques
- encourages students to make and study artworks with confidence
- gives students an understanding of the role of art and the artist in society

COURSE CONTENT

- A range of skills and concepts will be explored; (drawing, design, printing, painting, ceramics, sculpture and photography).
- Practical and theoretical tasks are covered.

ASSESSMENT

- Practical; folios, exhibitions, digital and multimedia presentations
- theoretical assignments, visual journals, evaluations

FEES

As a guide the fee for Visual Art in 2025 was \$65.00

RELATED SUBJECTS IN YEAR 11 & 12 – *Media Arts in Practice, Certificate II in Visual Arts.*



ELECTIVE SUBJECTS

DIGITAL TECHNOLOGIES (DIG)

AIMS

- To prepare students for the 2026 Senior Digital Solutions Course
- To enable students to engage with computational thinking and information systems to define, design and implement digital solutions.

COURSE CONTENT

The content is arranged around the following four topics

- Programming
- App & Web Design
- Cyber Safety and Security
- Digital Solutions

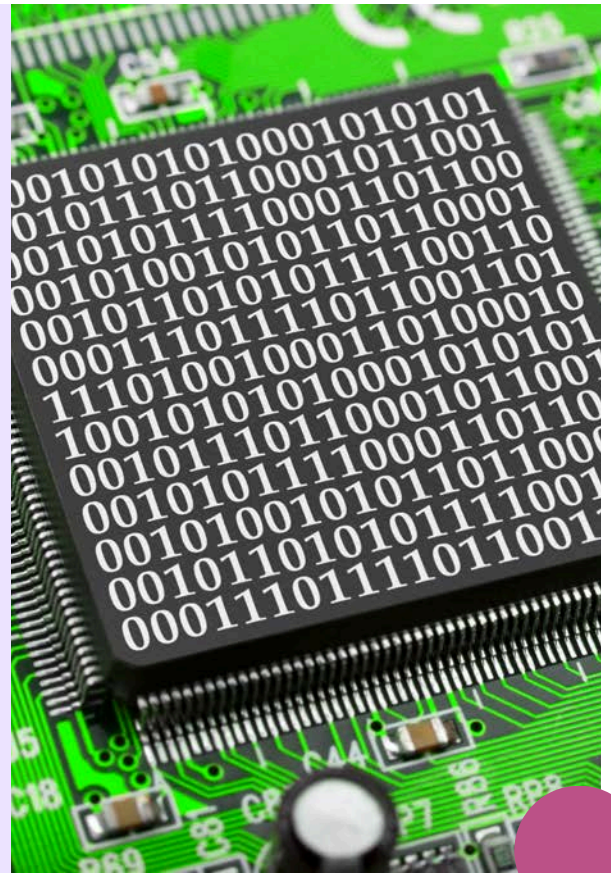
ASSESSMENT

- Combination of assignments, project work and challenges

FEES

As a guide the fee Digital Technologies in 2025 was \$30.00

RELATED SUBJECTS IN YEAR 11 & 12 – *Digital Technologies.*



MEDIA ARTS (MED)

AIMS

Students will:

- develop a broad knowledge and understanding of media and moving-image design, production and critique
- generate and experiment with ideas by using technologies to express themselves as citizens, consumers, workers and imaginative beings
- develop a higher-order cognitive and critical literacy skills related to moving-image media

COURSE CONTENT

- Five key concepts are used to study products and their contexts of production and use: Technologies, representations, Audiences, Institutions and Languages.

ASSESSMENT

Includes assessment of design, production and critique objectives.

FEES

As a guide, the 2025 fee for Media Arts was \$60.

RELATED SUBJECTS IN YEAR 11 & YEAR 12 – *Media Arts in Practice.*



ELECTIVE SUBJECTS



MUSIC (MUS)

AIMS

By the conclusion of the course, students should:

- analyse different scores and performances aurally and visually
- evaluate the use of music and defining characteristics from different musical styles
- interpret, rehearse and perform solo and ensemble repertoire in a range of forms and styles

COURSE CONTENT

- continue to develop their aural skills as they build on their understanding and use of elements of music
- extend their understanding and use of more complex rhythms and diversity of pitch
- extend their use of and identification of timbre to discriminate between instruments and voice types
- understanding of their role within an ensemble
- draw on music from a range of cultures
- explore music from a range of cultures
- evaluate performances

ASSESSMENT

- Performance
- Composition
- Responding

FEES

The fee for Music is covered by the general fee.

RELATED SUBJECTS IN YEAR 11 & YEAR 12 – Music.

ELECTIVE SUBJECTS



FOOD SPECIALISATIONS (TFD)

AIMS

By the conclusion of the course, students should:

- explain concepts and ideas from the food and beverage sector
- describe procedures in hospitality contexts from the food and beverage sector
- examine concepts and ideas and procedures related to industry practices from the food and beverage sector
- apply concepts and ideas and procedures when making decisions to produce products and perform services for customers
- use language conventions and features to communicate ideas and information for specific purposes
- plan, implement, justify decisions for events in hospitality contexts
- critique plans for, and implementation of, events in hospitality contexts
- evaluate industry practises from the food and beverage sector.

COURSE CONTENT

- Term 1 - Hygiene in the Hospitality Sector
- Term 2 - Hospitality Skills in Action
- Term 3 - Navigating the Hospitality Industry
- Term 4 - Hospitality in Practice

ASSESSMENT

In line with the Hospitality Practices Syllabus, students will be assessed as follows:

TERM 1: Examination

TERM 2: Project (actual event)

TERM 3: Investigation

TERM 4: Project (simulated event)

FEES

As a guide, the 2025 additional fee for Food Specialisations was \$155.00.

RELATED SUBJECTS IN YEAR 11 & YEAR 12 -
Hospitality Practices.

ELECTIVE SUBJECTS



MATERIALS & TECHNOLOGIES SPECIALISATIONS (TMT)

Designed to give students an introduction to the Technologies curriculum offerings in senior school (ie. Industrial Technology Skills). Computer-based technologies will be incorporated within the constraints of timetabling and facilities.

AIMS

To develop in students:-

- knowledge, understanding and skills related to industrial materials, equipment, processes and procedures
- practical skills associated with tools and equipment
- an appreciation of the role of industrial technology in society
- problem solving techniques and the ability to design practical solutions to given problems
- the ability to express and communicate ideas using sketches, diagrams, pictures and written forms
- responsible attitudes.

COURSE CONTENT

- Safety in workshop and industrial environments
- Nature of industrial materials
- Techniques for manipulating industrial materials
- Elements of principles of design
- Techniques for manipulating written and graphical information.

ASSESSMENT

- Tests, practical work and research projects and reports
- Design folio

FEES

As a guide, the 2025 additional fee for Material & Technologies Specialisations was \$80.00.

RELATED SUBJECTS IN YEAR 11 & YEAR 12 – *Industrial Technology Skills, Industrial Graphic Skills.*

DISTANCE EDUCATION (DE)

Students may wish to undertake an additional subject of their choice, that is perhaps not being offered at Mossman State High School in 2026.

These subjects may be studied through the Cairns or Brisbane Schools of Distance Education. These schools have their own running schedules, which means that students will be required to ensure that they are catching up on work that they may miss whilst out of their regular classes.

Please see the Head of Department Senior School for subject offerings and additional details.

FEES

As per School of Distance Education guidelines.



EXTRA-CURRICULAR SUBJECTS

INSTRUMENTAL MUSIC PROGRAM

The Instrumental Music Program at Mossman State High School offers a wonderful opportunity for your student to experience the world of music. There are a number of school ensembles that perform at numerous community events.

LESSONS

Lessons are conducted during school time and are 35 minutes long. Lessons are taught in groups and rotate to avoid students regularly missing the same curriculum lesson.

ENSEMBLES

Ensembles, (ie Concert Band, Jazz, and Strings) are part of the instrumental program.

PRACTICE

Progress on any instrument is dependent on regular practice. Practice should be regarded as homework and often best done along with the student's other set homework. Students are expected to practice 20-30 minutes at least 4 times a week.

PARENTAL SUPPORT

Your child's success will depend on support at home and the encouragement you can give.

SCHOOL INSTRUMENTS

The school owned instruments are there to provide an inexpensive way to find out if your child is going to enjoy playing a particular instrument.

FEES

As a guide, the 2025 additional fee for Instrumental Music was \$100.00. Instrument hire was \$120.00, uniform (band shirt) was \$37.40.



EXTRA-CURRICULAR SUBJECTS

THE DUKE OF EDINBURGH AWARD (DED)

The Duke of Edinburgh's International Award is an exciting development program that provides young people the opportunity to accept challenges and explore their interests in a program tailored to suit personal circumstances and choices. The Award is both fun and challenging and helps participants build confidence and resilience.

Successful completion of The Duke of Ed levels during Years 9 to 12 will contribute credit towards a student's Queensland Certificate of Education (QCE) and is increasingly being recognised by potential employers. This highly reputable and internationally recognised Award program will be a standout addition on a student's resume.

There are three levels of the Duke of Ed - Bronze (over 14 years of age), Silver (over 15 years of age) and Gold (over 16 years of age). To achieve these awards, participants will complete an **Arduous Journey**, and regularly commit to three ongoing sections: Learning a **Skill**, participating in a community **Service** and **Physical Recreation**.



Service - The Service Section encourages young people to volunteer their time and understand the benefits of this service to their community.



Physical Recreation - The Physical Recreation Section encourages young people to participate in sport and physical recreation for the improvement of health, wellbeing and fitness.



Skills - The Skills Section encourages the development of personal interests and practical and social skills.



Adventurous Journey - The Adventurous Journey Section encourages a sense of adventure whilst undertaking a team journey or expedition in an unfamiliar setting.

STRUCTURE

SERVICE	PHYSICAL RECREATION	SKILLS	ADVENTUROUS JOURNEY
Bronze - Minimum 3 months Silver - Minimum 6 months Gold - Minimum 12 months	Bronze - Minimum 3 months Silver - Minimum 6 months Gold - Minimum 12 months	Bronze - Minimum 3 months Silver - Minimum 6 months Gold - Minimum 12 months	Bronze - 2 day + 1 night practice 2 day + 1 night qualifying Silver - 3 day + 2 night practice 3 day + 2 night qualifying Gold - 5 day + 4 night practice 5 day + 4 night qualifying

- Students selecting Silver who have done the Bronze Award previously, must have this completed to be eligible to continue to the next level. New students can enter at Bronze, Silver or Gold level.
- With direct entry to Silver Duke of Ed, an additional 6 months must be completed in one section.
- With direct entry to Gold Duke of Ed, an additional 6 months must be completed in one section.
- Gold Duke of Ed students must also complete a Residential Project of 5 days and 4 nights.
- Students must work independently, planning their own skills, physical activity, service and journeys.
- Leader guidance will be available, however more independence is required for Silver and Gold levels.
- Students will also need to use more of their own time to complete hours.

FEES

- Bronze Award - \$190.00
- Silver Award - \$195.00
- Gold Award - \$200.00

Camps will occur an additional cost.

HOW TO MAKE YOUR SELECTION

From School -

1. Log on using your username and password.
2. Double click on the OneSchool Icon.
3. Click on the [My Education Plan] Tab.
4. Click on the [Subject Selection] Tab.
5. If it is the first time you have attempted to select subjects, the following message 'You currently have no subject selection model selected. Click [here](#) to select a new model'.
6. Click on [here] to select a new model.
7. Select: Year 10 - 2025.
8. Save.
9. Click on [Edit] Tab.
 - The Subject selection Form will appear.
10. Select subjects (one from each line).
11. Add any notes regarding your subject selection.
12. Save.
13. Check that you have saved successfully. (If not, error messages will appear at the top of the screen in red).



From Home -

1. Open Web Browser
2. Type in the address - <http://oslp.eq.edu.au>
3. Enter.
4. Enter your username and password as requested.
5. Follow steps 4 - 13 as above.

