



# MOSSMAN STATE HIGH SCHOOL

## YEAR 9 SUBJECT SELECTION

## HANDBOOK

---

# 2026



# Table of contents

Subject Overview	03
Student Resource Scheme (SRS)	04
Changing Subjects	04

## **CORE SUBJECTS**

English	05
Mathematics	05
Science	06
Humanities & Social Sciences	06
Health & Physical Education	07

## **ELECTIVE SUBJECTS**

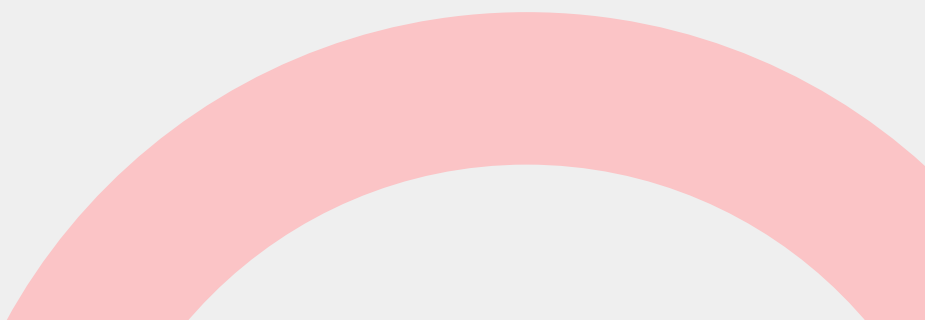
Digital Technologies	07
Drama	08
Food Specialisations	08
Materials & Technologies Specialisations	09
Media Arts	09
Music	10
Visual Arts	10
Distance Education	11

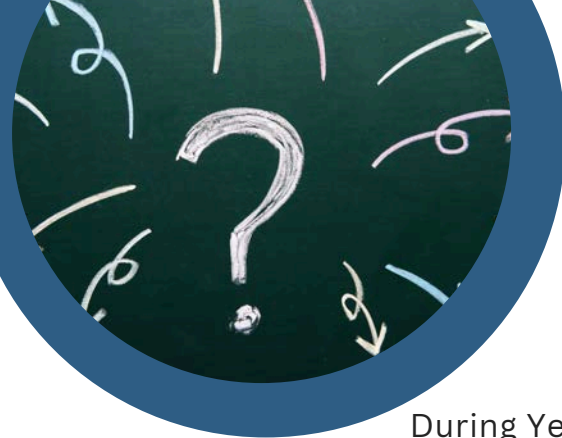
## **EXTRA-CURRICULAR**

Instrumental Music Program	12
The Bridge Award	13
The Duke of Edinburgh Award	14

## **HOW TO MAKE YOUR SELECTION**

How to enter subject preferences on OneSchoo	15
--	----





# SUBJECT OVERVIEW

## Year 9 – 2026

During Year 9 all students will study five (5) core subjects and four (4) elective subjects.

When selecting four (4) elective subjects, students need to take into account:

- Interests
- Abilities
- Past results
- Future goals

### CORE SUBJECTS

English

Maths

Science

Humanities &  
Social  
Sciences

Health &  
Physical  
Education

### ELECTIVE SUBJECTS

Digital  
Tech

Drama

Food Specs

Materials &  
Tech Specs

Media Arts

Music

Visual Art

**PLEASE CHOOSE CAREFULLY.** Subject preferences are required for planning Year 9 in 2026. It is important to be aware that subject classes will be created based on these subject preferences. If parent(s)/guardian(s) would like to discuss any aspect of their son's/daughter's subject selection, please contact the school ASAP to arrange a phone or a personal interview.

**SUBJECT OFFERINGS** - Following analysis of Elective Subject preferences, classes will be formed. Some students may have to revise their selection if:

- not enough students select a subject for a class to be formed, OR
- too many students select a subject.

If a subject is over maximum capacity, it will be capped using a criteria system considering the following:

- Subject fees
- Workplace health and safety
- Attendance
- Achievement
- Effort

Students may choose to participate in Instrumental Music and/or the Duke of Edinburgh Award/ and/or Distance Education in addition to the 4 subjects chosen. This is done as an addition to the Subject Selection Process and involves consultation with the relevant staff.

# STUDENT RESOURCE SCHEME (SRS)



Mossman State High School is committed to providing quality curriculum programs for all students. The P & C Association and school staff determine the Student Resource Scheme (**SRS**) fees each year to ensure adequate resources are available. These fees are set as part of the consultative budget process. Most subject fees are covered under the (SRS) Fees. Extra fees apply to subjects with consumable products. Fees for these subjects are listed below.

The fees provide resources for students, which enable them to achieve quality outcomes in the subjects that they choose to study.

**As a guide, the fees for 2025 were:**

## **GENERAL FEES - \$240.00**

### **ADDITIONAL FEES Subjects with consumable resources**

Digital Technologies	\$30.00
Food Specialisations	\$125.00
Materials & Technologies Specialisations	\$60.00
Media Arts	\$50.00
Visual Arts	\$65.00
Instrumental Music	\$100.00
The Bridge Award	\$65.00
Duke of Edinburgh Award	\$190.00

If you have any questions regarding subject general or additional fees, please contact the school.

## CHANGING SUBJECTS

Students will have the opportunity to change subjects at the end of Semester 1.

Students wishing to change subjects should contact the Deputy Principal. Parental permission will be required for students to change subjects.





# CORE SUBJECTS

## ENGLISH (ENG)

### AIM

- To develop students' abilities to compose and comprehend spoken and written English fluently and effectively, for a wide range of personal and social purposes.

### COURSE CONTENT

- The course is structured around the Australian Curriculum V9 for English.

### ASSESSMENT

- Students' assessment will be composed of a wide range of literary and non-literary genres across a variety of assessment modes, including: short story, magazine articles, persuasive speech, analytical essay, plays, poetry and parody.

### FEES

- The fee for English is covered by the general fee. This also covers entrance to Arts Council performances.



## MATHEMATICS (MAT)

### AIM

- To further develop students' knowledge about Mathematics, how to do Mathematics and where to use Mathematics.
- To develop students' ability to communicate their understanding of Mathematics in a coherent and logical way using Mathematical and everyday language.

### COURSE CONTENT

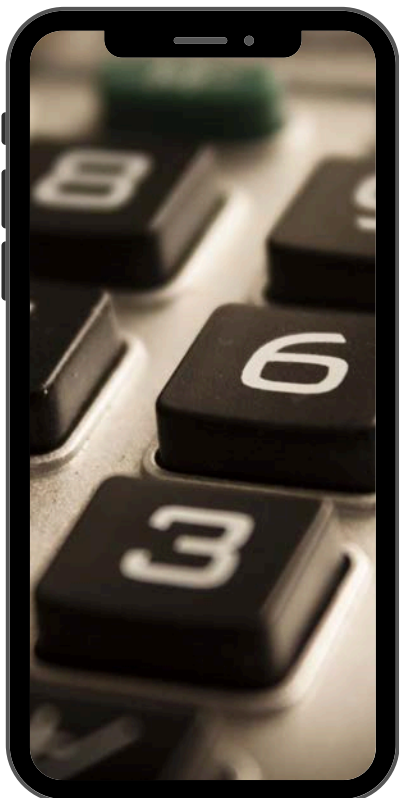
- The course has been developed using the Australian Curriculum V9 and develops understanding, fluency, problem solving and reasoning skills.

### ASSESSMENT

- Students' progress will be assessed using examinations and assignments.

### FEES

- The fee for Mathematics is covered by the general fee. A scientific calculator is essential and may be purchased from the school office for \$24.00 (inc GST).



# CORE SUBJECTS



## SCIENCE (SCI)

### AIM

- To develop students' interest in science and an appreciation of how science provides a means of exploring and understanding the changing world in which they live.

### COURSE CONTENT

- The course is structured around the Australian Curriculum V9 and is organised into three interrelated strands: Science Understanding, Science Inquiry Skills and Science as a Human Endeavour.

### ASSESSMENT

- Assessment will consist of a balance between supervised assessment (examinations), experimental investigations and non-experimental investigations (assignments) as applicable.

### FEES

- The fee for Science is covered by the general fee.

## HUMANITIES AND SOCIAL SCIENCES (HSO)

### AIM

- Humanities and Social Sciences provides students with opportunities to explore environmental, cultural, economic and political systems across a range of settings and time periods.

### COURSE CONTENT

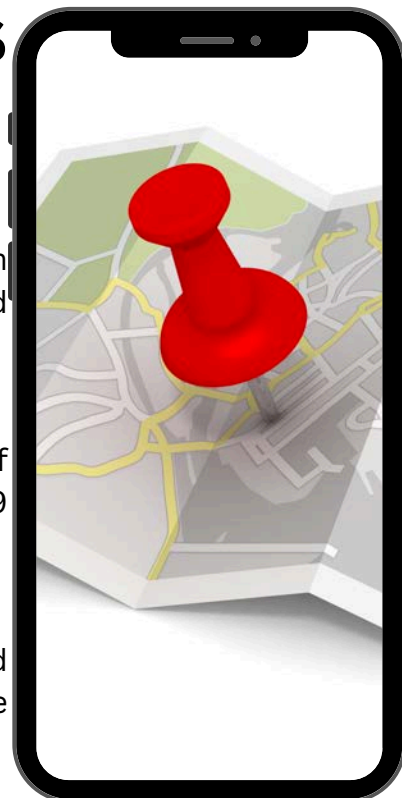
- Although Humanities and Social Sciences incorporates a range of subjects, the focus in Year 8 and 9 is the Australian Curriculum v9 for History and Geography.

### ASSESSMENT

- Students' assessment will consist of research assignments, field reports, practical exercises, oral presentations, debates, response to stimulus, short answer tests and multi-media presentations.

### FEES

- The fee for Humanities and Social Sciences is covered by the general fee.



# CORE SUBJECTS

## HEALTH & PHYSICAL EDUCATION (HPE)

### AIM

- To develop students' abilities to engage with and enjoy movement-based learning experiences.
- To develop and use personal, behavioural, social and cognitive skills and strategies to promote a sense of wellbeing.

### COURSE CONTENT

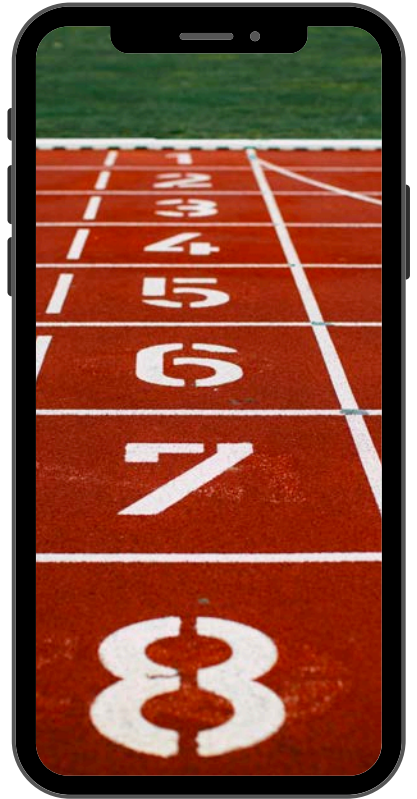
- The course is structured around the Australian Curriculum V9 for Health & Physical Education and includes topics such as Respectful Relationships, Community Fitness, Inclusion Games, Sport Education and Skill Correction.

### ASSESSMENT

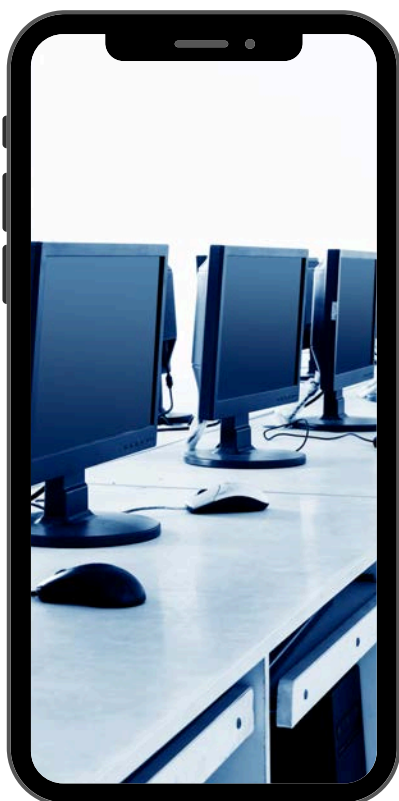
- Students' practical and theoretical components will be assessed each term, by demonstration of physical skills and completion of assignments and examinations.

### FEES

- The fee for Health & Physical Education is covered by the general fee.



# ELECTIVE SUBJECTS



## DIGITAL TECHNOLOGIES (DIG)

### AIM

- To enable students to engage with computational thinking and information systems to define, design and implement digital solutions.

### COURSE CONTENT

- The course content is arranged around the following four (4) topics: Networking and Operating Systems, Game Design, App Design and Web Design.

### ASSESSMENT

- Students' assessment is conducted through a combination of assignments, project work and challenges.

### FEES

- As a guide, the 2025 additional fee for Digital Technologies was \$30.00.

# ELECTIVE SUBJECTS



## DRAMA(DRA)

### AIM

- To improve speaking and communication skills and develop confidence and self-control.
- To develop performance skills and appreciation of the performing arts.

### COURSE CONTENT

- Students participate in a variety of topics such as: Play Buidling, Play Study, Collage Drama Script and Collage Drama Performance, Children's Theatre Performance.

### ASSESSMENT

- Students' achievements are assessed mostly by evaluating their practical performances. Written assessments are also completed.

### FEES

- The fee for Drama is covered by the general fee.

## FOOD SPECIALISATIONS (TFD)

### AIM

- To promote understanding of nutritional concepts, healthy eating and consumer awareness.
- To develop a range of food preparation skills and garnishing and decoration techniques.
- To foster safe and hygienic practices in the kitchen.

### COURSE CONTENT

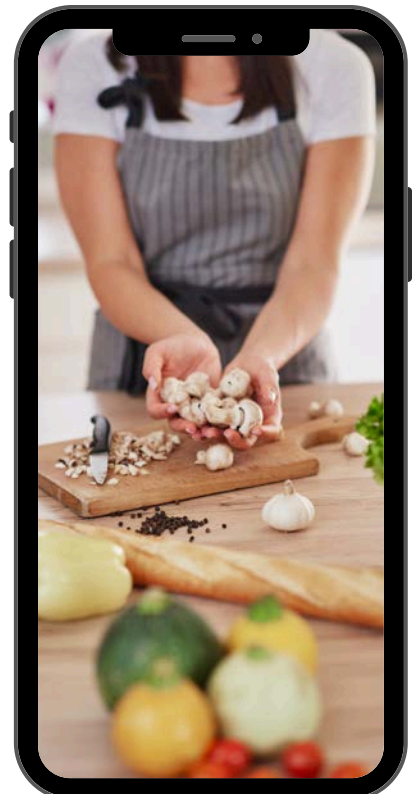
- The course consists of two (2) units: Term 1 - The Impact Food has on our Bodies and Term 2 - Eating Green.

### ASSESSMENT

- Students' assessment is conducted through a combination of practical cooking assessments, research investigations and written examinations.

### FEES

- As a guide, the 2025 additional fee for Food Specialisations was \$125.00.





# ELECTIVE SUBJECTS

## MATERIALS & TECHNOLOGIES SPECIALISATIONS (TMT)

### AIM

- To develop students' knowledge, understanding and skills related to course content, problem solving skills, responsible attitudes, self-reliance and a sense of self-worth.

### COURSE CONTENT

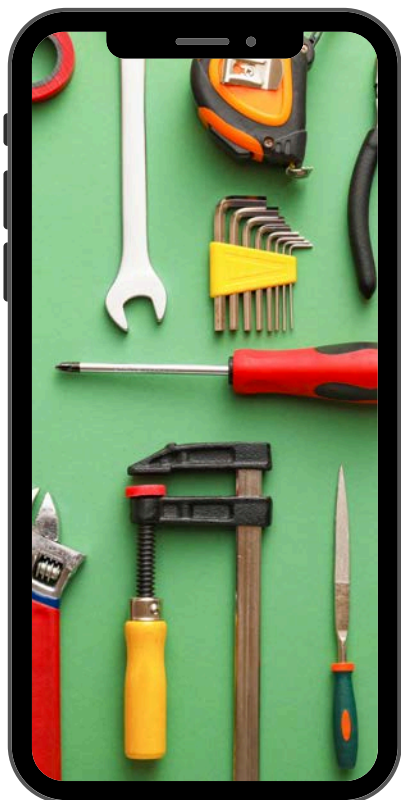
- The course is structured around safety, natural properties and characteristics of materials, construction techniques and the principles and elements of design.

### ASSESSMENT

- Students' achievement will be assessed by finished projects, project notes and related work sheets and related research, planning and design.

### FEES

- As a guide, the 2025 additional fee for Materials & Technologies Specifications was \$60.00.



## MEDIA ARTS (MED)

### AIM

- To develop students' understanding of structure, intent, character, settings, point of view and genre conventions and exploring media conventions by responding to and creating media art works.

### COURSE CONTENT

- The course content covers: Developing Basic Film Techniques, Critique Narrative Technique, Game Design and Advertising/Promotional Media.

### ASSESSMENT

- Students' achievement will be assessed with essay critiques, designing short film scenes, editing and producing videos.

### FEES

- As a guide, the 2025 additional fee for Media Arts was \$50.00.



# ELECTIVE SUBJECTS

## MUSIC (MUS)

### AIM

- To enable students to identify and analyse how the elements of music are used in different styles and apply this knowledge in their performances and compositions.

### COURSE CONTENT

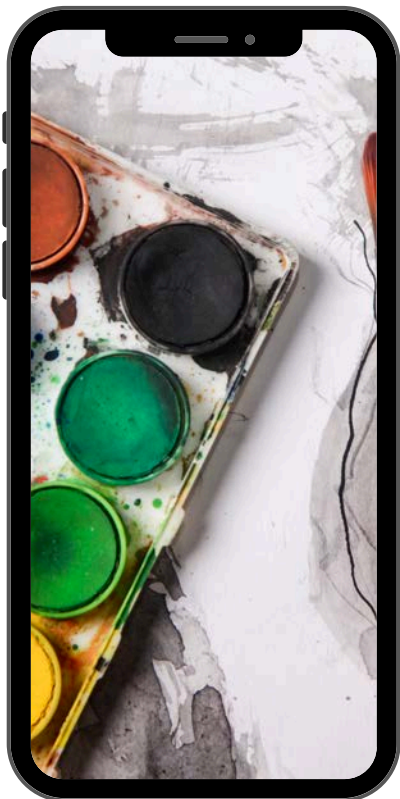
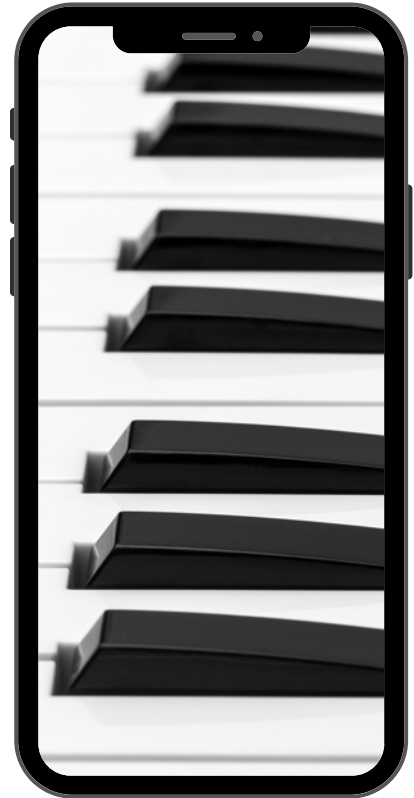
- The course includes experimenting with texture and timbre in sound. Developing musical idea such as mood and improvisation. Practising a variety of music and composing and performing own musical pieces.

### ASSESSMENT

- Students' assessment is conducted through performance, composition and music analysis.

### FEES

- The fee for Music is covered by the general fee.



## VISUAL ART (ART)

### AIM

- To develop visual expression and creative potential.
- To develop skills and techniques with visual art forms and media.
- To acquire knowledge and appreciation of visual art history.

### COURSE CONTENT

- Students will have experiences in: painting, drawing, sculpture, ceramics, print making, fabric and textiles and design and illustration.

### ASSESSMENT

- Students' achievements are assessed with the development of an ongoing portfolio.

### FEES

- As a guide, the 2025 additional fee for Visual Art was \$65.00.

# ELECTIVE SUBJECTS

## DISTANCE EDUCATION

Students may wish to undertake an additional subject of their choice, that is perhaps not being offered at Mossman State High School in 2026.

These subjects may be studied through the Cairns or Brisbane Schools of Distance Education. These schools have their own running schedules, which mean that students will be required to ensure that they are catching up on work that they may miss whilst out of their regular classes.

Please see the Head of Department for Engagement & Student Services for subject offerings and additional details.

### FEES

As per School of Distance Education guidelines.



# EXTRA-CURRICULAR SUBJECTS

## **INSTRUMENTAL MUSIC PROGRAM**

The Instrumental Music Program at Mossman State High School offers a wonderful opportunity for your student to experience the world of music. There are a number of school ensembles that perform at numerous community events.

### **LESSONS**

Lessons are conducted during school time and are 35 minutes long. Lessons are taught in groups and rotate to ensure students do not regularly miss the same curriculum lesson.

### **ENSEMBLES**

Ensembles, (ie Concert Band, Jazz, Strings and Woodwind) are part of the instrumental program.

### **PRACTICE**

Progress on any instrument is dependent on regular practice. Practice should be regarded as homework and often best done along with the student's other set homework. Students are expected to practice 20-30 minutes at least 4 times a week.

### **PARENTAL SUPPORT**

Your child's success will depend on support at home and the encouragement you can give.

### **SCHOOL INSTRUMENTS**

The school owned instruments are there to provide an inexpensive way to find out if your child is going to enjoy playing a particular instrument.

### **FEES**

As a guide, the 2025 additional fee for instrumental music was \$257.40 which included: Instrumental music lessons (\$100.00), Instrumental Music instrument hire (\$120.00) and an Instrumental Music shirt (\$37.40) (uniform)





# EXTRA-CURRICULAR SUBJECTS

## THE BRIDGE AWARD

The Bridge Award is a positive youth development program that is fun and challenging. It offers young people the opportunity to gain new skills, improve physical fitness, complete community service and develop a sense of adventure.

The Bridge Award is available to people aged 11 and a half to 25 years. It builds confidence and resilience and is a great introduction for the Bronze Level of the Duke of Edinburgh (from age 14).

There are two (2) levels for the Bridge Award. You can choose to do one or both, but you cannot do both at the same time.

Each level has four (4) sections you need to complete, with Level 2 requiring a greater commitment.



**Service** - The Service Section encourages involvement in the community and helping others.



**Physical Recreation** - The Physical Recreation Section encourages young people to participate in physical activity and improve fitness.



**Skills** - The Skills Section encourages the development of personal interests and practical and social skills.



**Adventurous Journey** - The Adventurous Journey Section encourages a spirit of adventure and discovery.

Award Sections	Level 1	Level 2
Service	To visit at least 3 community services and facilities in the local area for a minimum of 5 hours; OR Undertake a practical volunteering activity for a minimum of 5 hours.	To study and develop further interests in one community service for a minimum of 10 hours; OR Undertake a practical volunteering activity for a minimum of 10 hours.
Skill	Explore an interest/hobby for a minimum of 5 hours over a minimum of 2 whole months.	Participate in an interest/hobby for a minimum of 10 hours over a minimum of 4 whole months.
Physical recreation	Learn and practice a physical activity for a minimum of 6 hours over a minimum of 2 weeks.	Participate in a physical activity for a minimum of 12 hours over a minimum of 4 weeks.
Adventurous Journey	To prepare and partake in a journey through a local area for a minimum of 4 hours over 1 day.	To prepare and partake in a journey through an unfamiliar area for a minimum of 4 hours per day over 2 days.

## FEES

It costs \$65.00 to participate in the Bridge Award. This covers Levels 1 and 2 of the Award. This fee also covers insurance, record book, certificate and badge. Additional costs include attending camps or excursions. EG. Level 2 Speewah Camp is approximately \$150.00.

# EXTRA-CURRICULAR SUBJECTS

## THE DUKE OF EDINBURGH AWARD

The Duke of Edinburgh's International Award is an exciting development program that provides young people the opportunity to accept challenges and explore their interests in a program tailored to suit personal circumstances and choices. The Award is both fun and challenging and helps participants build confidence and resilience.

Successful completion of The Duke of Ed levels during Years 9 to 12 will contribute credit towards a student's Queensland Certificate of Education (QCE) and is increasingly being recognised by potential employers. This highly reputable and internationally recognised Award program will be a standout addition on a student's resume.

There are three levels of the Duke of Ed - Bronze (over 14 years of age), Silver (over 15 years of age) and Gold (over 16 years of age). To achieve these awards, participants will complete an **Arduous Journey**, and regularly commit to three ongoing sections: Learning a **Skill**, participating in a community **Service** and **Physical Recreation**.



**Service** - The Service Section encourages young people to volunteer their time and understand the benefits of this service to their community.



**Physical Recreation** - The Physical Recreation Section encourages young people to participate in sport and physical recreation for the improvement of health, wellbeing and fitness.



**Skills** - The Skills Section encourages the development of personal interests and practical and social skills.



**Adventurous Journey** - The Adventurous Journey Section encourages a sense of adventure whilst undertaking a team journey or expedition in an unfamiliar setting.

## STRUCTURE

SERVICE	PHYSICAL RECREATION	SKILLS	ADVENTUROUS JOURNEY
<b>Bronze</b> - Minimum 3 months	<b>Bronze</b> - Minimum 3 months	<b>Bronze</b> - Minimum 3 months	<b>Bronze</b> - 2 day + 1 night practice 2 day + 1 night qualifying

- Students must work independently, planning their own skills, physical activity, service and journeys.
- Leader guidance will be available, however more independence is required for Silver and Gold levels.
- Students will also need to use more of their own time to complete hours.

## FEES

- Bronze Award - \$190.00

Camps will occur an additional cost.



# How to Enter Subject Selection Preferences on OneSchool

## From School -

1. Log on using your username and password.
2. Double click on the OneSchool Icon.
3. Click on the [My Education Plan] Tab.
4. Click on the [Subject Selection] Tab.
5. If it is the first time you have attempted to select subjects, the following message 'You currently have no subject selection model selected. Click [here](#) to select a new model'.
6. Click on [here] to select a new model.
7. Select: Year 9 - 2025.
8. Save.
9. Click on [Edit] Tab.
  - The Subject selection Form will appear.
10. Select subjects (one from each line).
11. Add any notes regarding your subject selection.
12. Save.
13. Check that you have saved successfully. (If not, error messages will appear at the top of the screen in red).



## From Home -

1. Open Web Browser
2. Type in the address - <http://oslp.eq.edu.au>
3. Enter.
4. Enter your username and password as requested.
5. Follow steps 4 - 13 as above.

